



ONE MANHATTAN SQUARE
252 SOUTH STREET

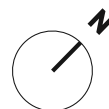
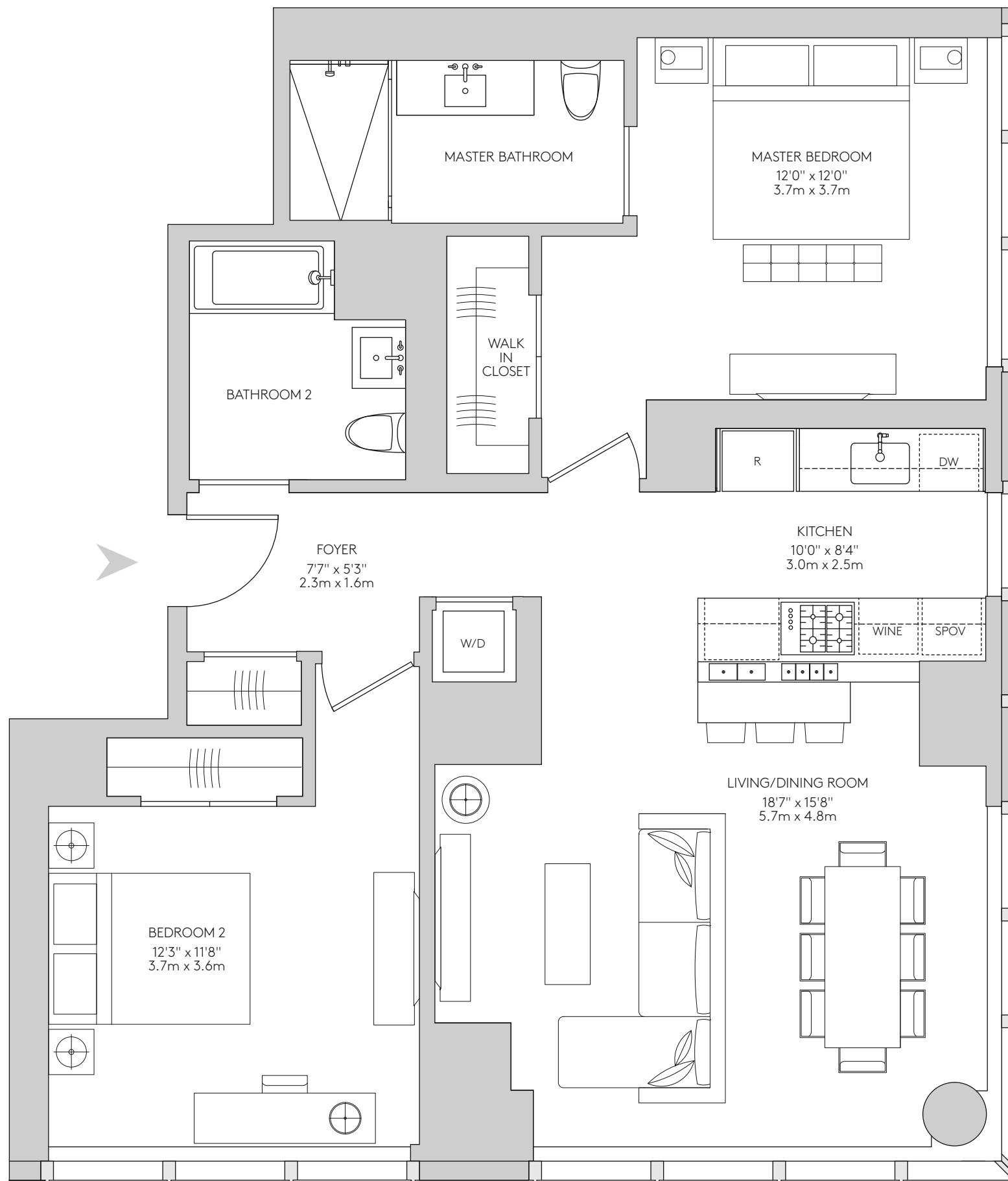
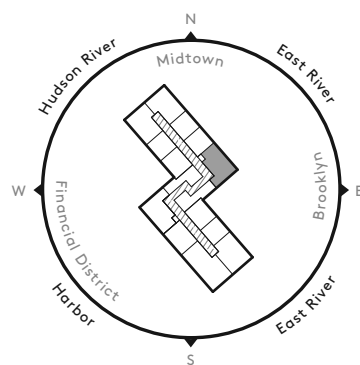
RESIDENCE 33G – 53G

2 BEDROOMS
2 BATHROOMS

1,156 square feet
107.4 square meters

- Gracious entry foyer
- Corner living/dining room
- Windowed gourmet kitchen with breakfast bar
- Master bedroom suite with walk-in closet
- Master bathroom with radiant heat flooring
- Split bedroom layout
- Multiple exposures
- 5" wide hardwood flooring
- Imported stone and custom finishes
- Dornbracht fittings
- Premium Miele appliance package
- Washer and dryer

KEY PLAN AND VIEWS



The complete offering terms are in an offering plan available from Sponsor. File No. CD15-0185. Sponsor: CPS Fee Company LLC, 805 Third Avenue, Seventh Floor, New York, NY 10022. All dimensions are approximate and subject to normal construction variances and tolerances. Square footage exceeds the usable floor area. Sponsor reserves the right to make changes in accordance with the terms of the Offering Plan. Plans and dimensions may contain minor variations from floor to floor. Refer to the window patterns for this unit depicted on the façade pattern plan included as Exhibit 5A in Part II of the Offering Plan. Units will not be offered furnished. Furniture layouts shown are for concept only and are not coordinated with building systems. No representation or warranty is made that a Unit Owner will be able to implement the furniture layout shown above. Equal Housing Opportunity.