

MANHATTAN'S WATERFRONT BOOM

PUBLIC INVESTMENT



RESIDENTIAL DEVELOPMENT

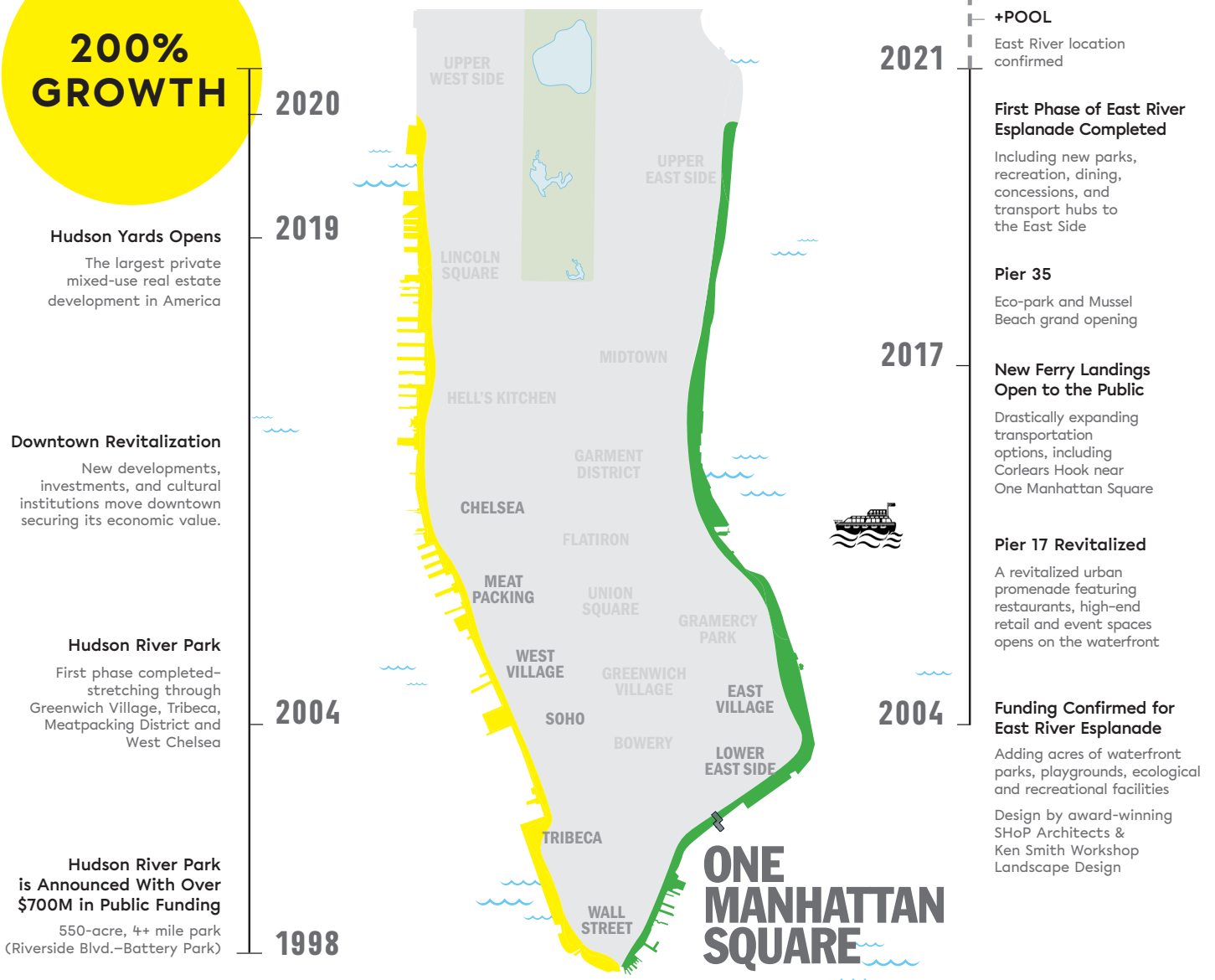


INCREDIBLE VALUE POTENTIAL

UNTAPPED GROWTH

In 1998 residential values on the Manhattan waterfront were on par with the overall Manhattan average. 15 years after the first phase of Hudson River Park was completed, **west side waterfront values doubled** compared to the general Manhattan average. Come discover all that's happening on the East Side Waterfront and **unlock the value of One Manhattan Square**.

200% GROWTH

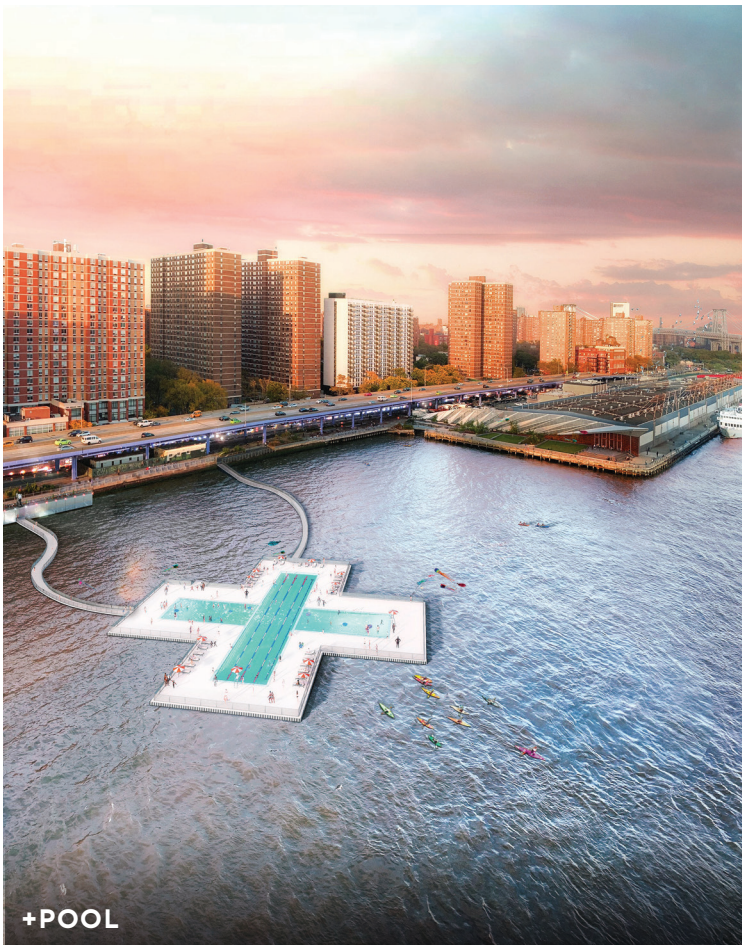




PIER 35



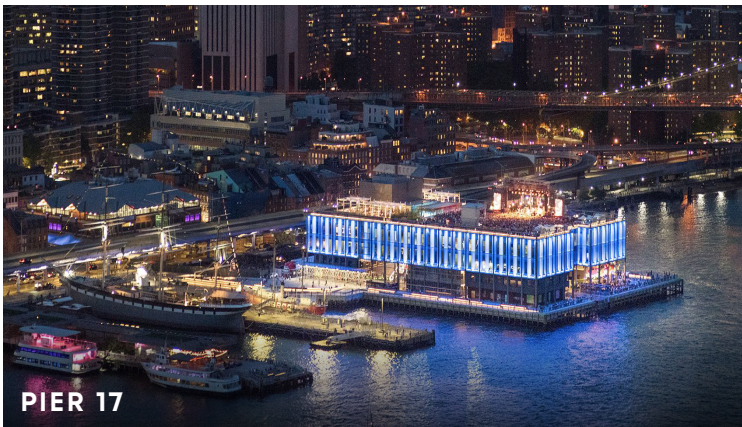
EAST RIVER ESPLANADE



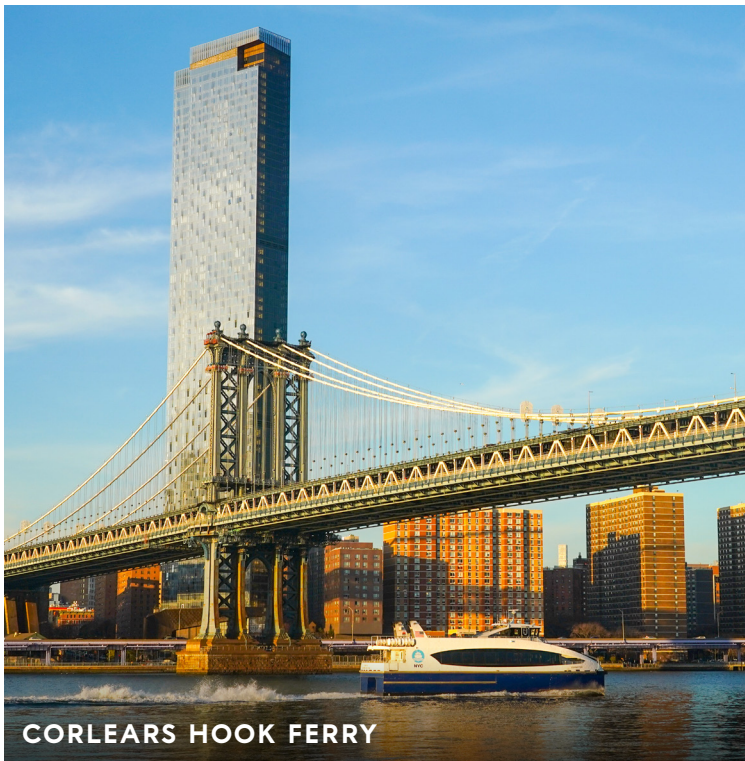
+POOL



WATERFRONT DESIGNED
BY SHOP ARCHITECTS



PIER 17



CORLEARS HOOK FERRY